

# Bentley CE Primary School

## 'Meet the Headteacher'

### Autumn 2022



BENTLEY C.E. PRIMARY SCHOOL

Love Community Courage

# You have hopefully chosen Bentley because...

- We celebrate the individual
- We are a Church school with strong values – Love, Courage and Community
- We are not a ‘hot house’ exam machine type school, but want **all** pupils to succeed and *enjoy* life long learning
- We get great feedback to say Bentley pupils go onto do well, **wherever** they go in Year 7!

# Ofsted September 2021

School report



- “Learning at Bentley is ambitious, exciting and inclusive”
- “Bullying does not take place”
- “Pupils and staff are passionate about reading”
- “Behaviour throughout the school is exceptionally positive”
- “Making you happy is a key part of Bentley”

## Inspection of Bentley Church of England Primary School

School Lane, Bentley, School Lane, Farnham, Surrey GU10 5JP

Inspection dates: 14 and 15 September 2021

<b>Overall effectiveness</b>	<b>Good</b>
The quality of education	<b>Good</b>
Behaviour and attitudes	<b>Outstanding</b>
Personal development	<b>Outstanding</b>
Leadership and management	<b>Good</b>
Early years provision	<b>Good</b>
Previous inspection grade	Outstanding

This school was last inspected 14 years ago and judged 'Outstanding' under a previous inspection framework. This reflected the school's/college's overall effectiveness under the inspection framework in use at the time. From then until this year the school was exempted by law from routine inspection, so there has been a longer gap than usual between inspections. Judgements in this report are based on the current inspection framework and also reflect changes that may have happened at any point since the last inspection.

# Next steps...

- Assessment within the foundation subjects is not yet consistently in place. Teachers do not always carefully check that pupils have securely learned the key knowledge and skills before moving on. Leaders should work carefully with teachers to implement and monitor this assessment. This will support pupils to build and secure the knowledge they need across the school's curriculum.
- What we have done and are doing;
- Giving teachers leadership time to address subject specific next steps
- Bringing in expert trainers
- Ensuring all teachers and teaching staff feel really confident with the curriculum they teach

# Other awards & successes from 2021-22

- Basketball – Hampshire Games
- PE – 115 children have represented us in competitions!
- Charities – supported Afghan Care4Calais, Alton food bank, Remembrance, WWF, Red Nose Day, Ukraine DEC, Kaira Konko and Cancer Research being squeezed in next week!
- Wonderful PTFA work – we have managed to raise over £17k last year and have a great new PTFA team in place. We need your continued support!
- Continued links with St Mary's – prayer weeks, Gemma and supporting new Vicar Matt's recruitment
- Growing two babies whilst teaching a class – Mrs Blake and Mrs Vogel

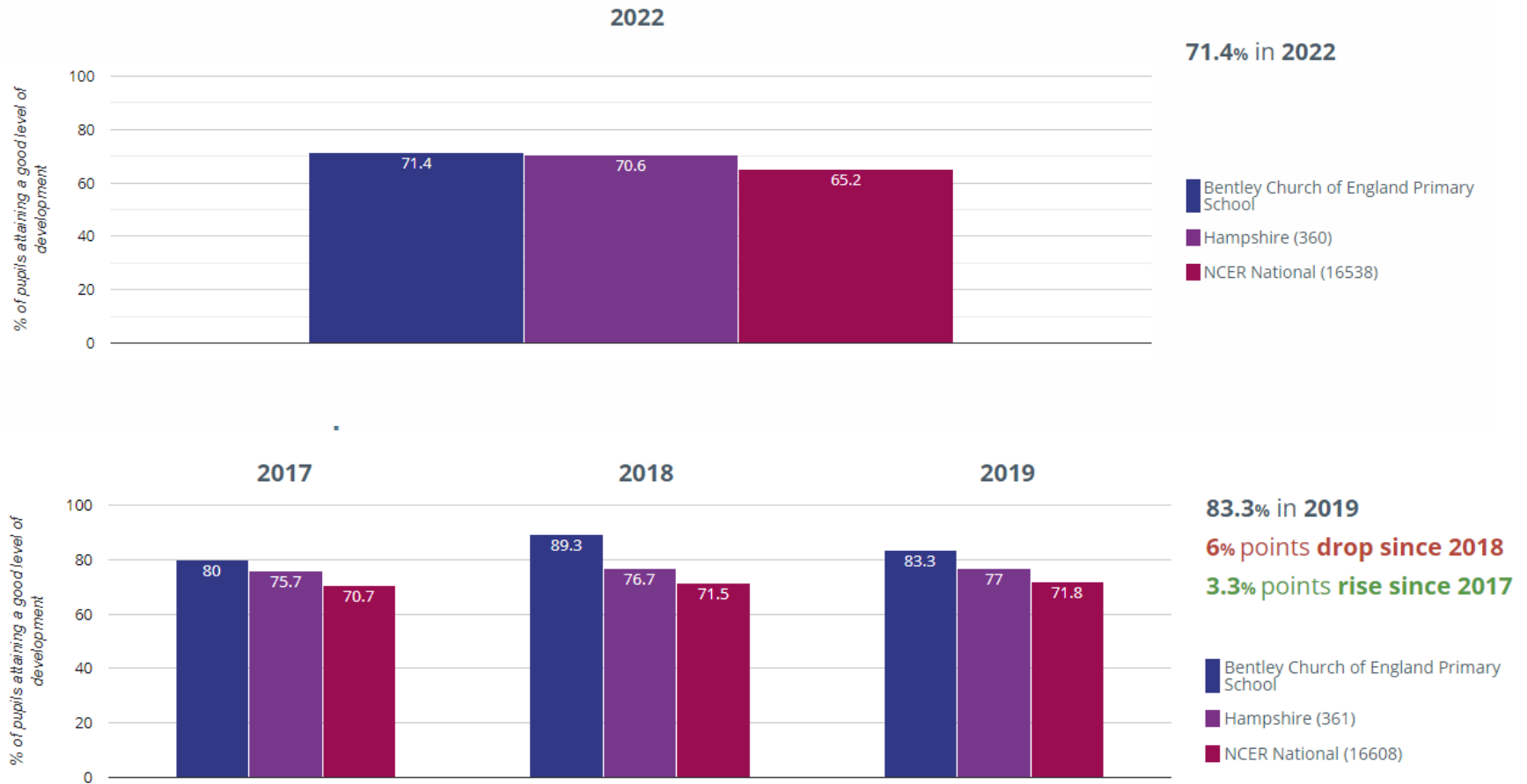
# Data

- Back to 'normal' again for National testing...
- Year 6 – GPS, Maths & Reading
- Year 4 Multiplication test
- **Year 2 Reading, Maths & GPS**
- Year 1 phonics
- Year 1 phonics
- Baseline Year R



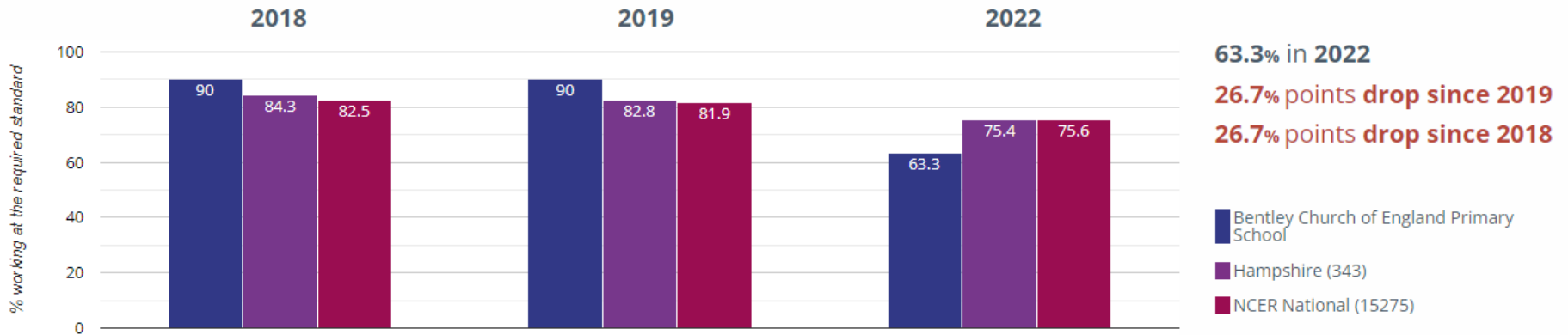
# EYFS results 2022

## ★ Good Level Of Development



# Phonics results

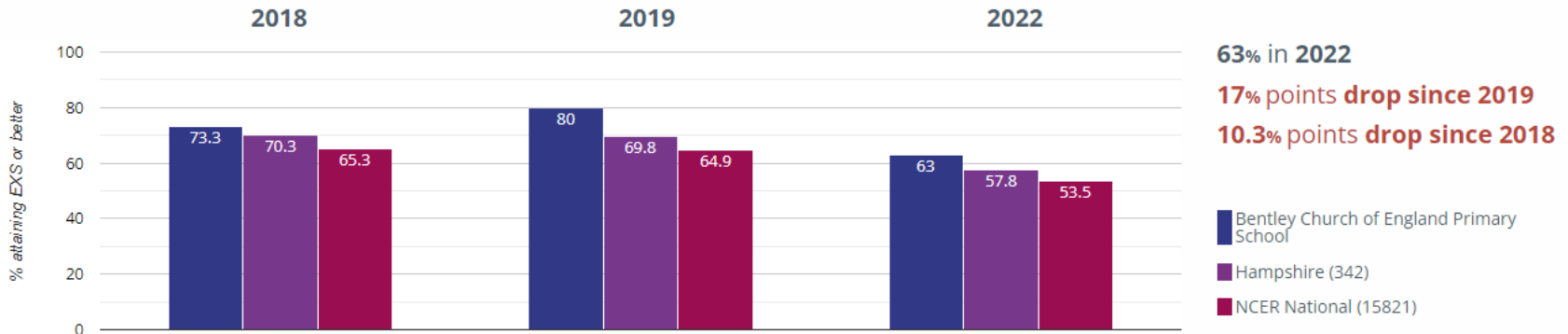
## Year 1: Working At



This is an area of concern for us. Reading and phonics are both on our school development plan. We use an excellent scheme in Read Write Inc and have already retrained all staff and invested in excellent new reading books.

# KS1 results

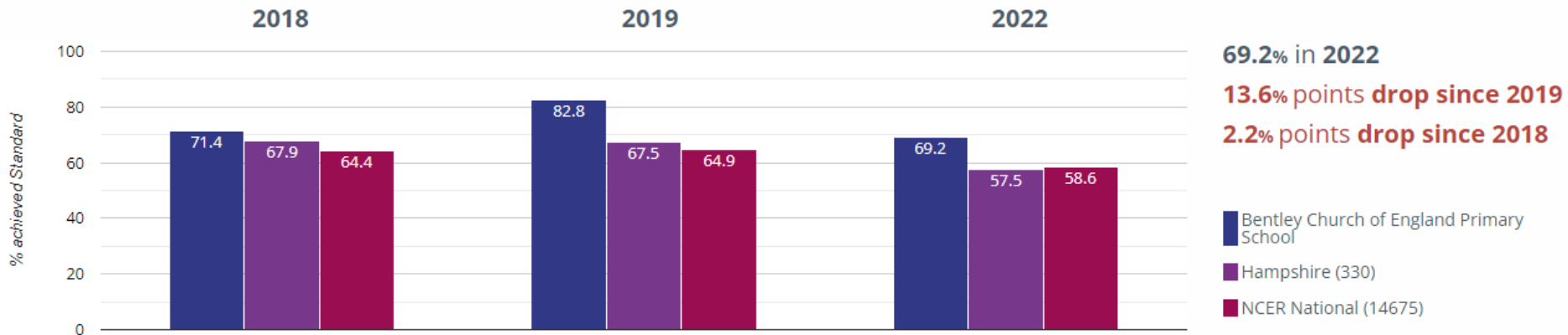
## RWM - attaining EXS or better



The GLD is hiding some concerns here, particularly with reading. This Bentley cohort were more adversely affected by the lockdown. Phonic security was an issue in September. However children have made substantial progress last year. An amazing 'catch up' approach was used for phonics in the autumn term of 2021.

# KS2 results

## RWM - achieved standard



ARE was above in all areas but GDS was frustrating – it felt as though the children just needed a month more! Children were incredibly proud of their outcomes. All children have made good progress.

# Attendance

- The target governors set for each pupil is 98%
- In 2021 we achieved 97% across the whole school  
(National was 94.2% on 1<sup>st</sup> July)
- A big shift in Department for Education expectations this year and Penalty notices are back (10 unauthorised absences logged over 100 days of school, second PN goes to court)
- Covid impact...bad habits? New 'norms'?
- Support is available and new County Legal Intervention Team is set up to help pupils
- The school day is 8.45am to 3.15am – don't be late!

# Everyone is welcome at Bentley!

- Did you know?
- We have at least 13 children who speak another language at home. Several of our pupils with English as a first language have lived in another country. We celebrate this rich mix of cultures and experiences.
- Over 5% of our pupils are from Service families
- 61% of our pupils have Christianity as their listed religion but we also have pupils who are Hindu, Muslim and of 'no faith' too
- We typically have around 16% of pupils on our Special needs register
- We have children who come from a wide range of cultures and socio-economic backgrounds
- Our expectations, school uniform and ethos work hard to ensure that **every** child is valued and feels included

# Bullying & Racist incidents

We log incidents for staff and pupils - like any modern workplace. We ensure issues are dealt with in line with our policies. Last year we logged;

- 2 racist incidents
- 1 bullying incident – investigated
- 1 peer to peer abuse involving boy to girl inappropriate touch
- We have a legal duty to log any concerns with the Hampshire Safeguarding team – in the vast majority of cases this leads to support which parents say is helpful
- Conducted Prejudicial language survey across the school – led to our Diversity assemblies this term to celebrate our differences and similarities

# School Development Plan Targets 2022-23

**1. Phonics**

**2. Reading & vocabulary**

**3. Assessment & Greater  
depth outcomes**

**4. Teamwork**



# How you can help?

- Reading at home – we expect 5 times a week expectation, out loud at least twice for Juniors
- Homework  
(should be accessible for **children** to complete it with just a little adult supervision)
- Parents Evenings
- PTFA
- Share your ideas



Bentley CE Primary School values a strong relationship between parents and carers. As a partnership, parents and staff share the school values of *Love, Courage and Community*. These values are a foundation for effective working relationships and support the school rules of *Ready, Respectful, Safe*. As adults we appreciate that we are all role models and the way in which we behave influences the way children behave in terms of relationships, social skills and conduct.

Participating together helps us to achieve the very best for Bentley children in a mutually supportive school community which helps to ensure that our children achieve their very best and are equipped with the necessary skills needed for life and on into adulthood.

#### PARENT/CARER AGREEMENT

As a parent/carer of a child at Bentley CE Primary School I agree to:

- Support the school ethos and shared Christian values of *Love, Courage and Community*
- Ensure that my child arrives at school in time for registration every day in the correct school uniform
- Maintain good communication links with the school by informing the school of any circumstances that may affect my child's wellbeing or emotions, reading the newsletter and checking the website for information
- Respond promptly to letters/requests from the school
- Encourage and help my child to do their best at all times, supporting them to do their reading and homework and attending parents' evenings
- Treat all members of the school community with courtesy and respect, modelling appropriate behaviour both in person and online, for example when sending emails to the school or posting on social media sites
- Trust the school to do their best to deal with any problems or concerns regarding my child and support the school in doing so
- Only post online photos of my own child/children taken at school events

#### SCHOOL AGREEMENT

As a school we agree to:

- Uphold our school values of *Love, Courage and Community*
- Welcome you into the life of the school
- Help you to support your child's learning at home by sharing information about the curriculum and keeping the school website up to date with key information that you need
- Respond promptly to your queries and concerns, meeting with you at a mutually convenient time
- Encourage your child to achieve their very best, providing support and guidance in the areas where they may need help
- Support your child in their personal, social, spiritual and moral development, valuing them as a member of our school community
- Show all parents and children courtesy and respect, expecting to receive the same in return
- Provide a safe and caring environment for learning, with opportunities for educational visits and visitors for all classes and an annual residential visit for each Key Stage Two class

#### CHILDRENS AGREEMENT

As a pupil at Bentley CE Primary School I agree to:

- Follow the school values of *Love, Courage and Community*
- Be ready for my learning by coming to school on time, in the correct school uniform and having done my homework
- Be respectful by following the school rules and the S.T.E.P (Sorry, Thank You, Excuse Me, Please) code, being kind and considerate, treating everyone fairly and looking after the school environment
- Be safe by not putting myself or other people in danger
- Tell someone I trust if I have a problem

Other policies, including Safeguarding, Uniform, Behaviour, Attendance, Complaints and E-Safety, which contribute to this policy, can be found and read on the school website or obtained from the school office.

# Encourage your child

- Praise the effort not the outcome – open mindset!
- Try a club or a new experience
- Extend experiences beyond Bentley in the Juniors – but in balance! (e.g. Scouts, team sport, theatre groups, ‘good deeds’)
- Let us know about learning outside school
- Link in with the curriculum & have fun as a family to extend school learning (museums, art galleries, visit places etc)
- Teach your children to carry their own school bags, speak politely to all adults, be kind to other children and take some (age appropriate!) responsibility
- Let them know it is OK to make mistakes but to say sorry when they should (we appreciate this is *hard* parenting work!)
- Teach gratitude 😊

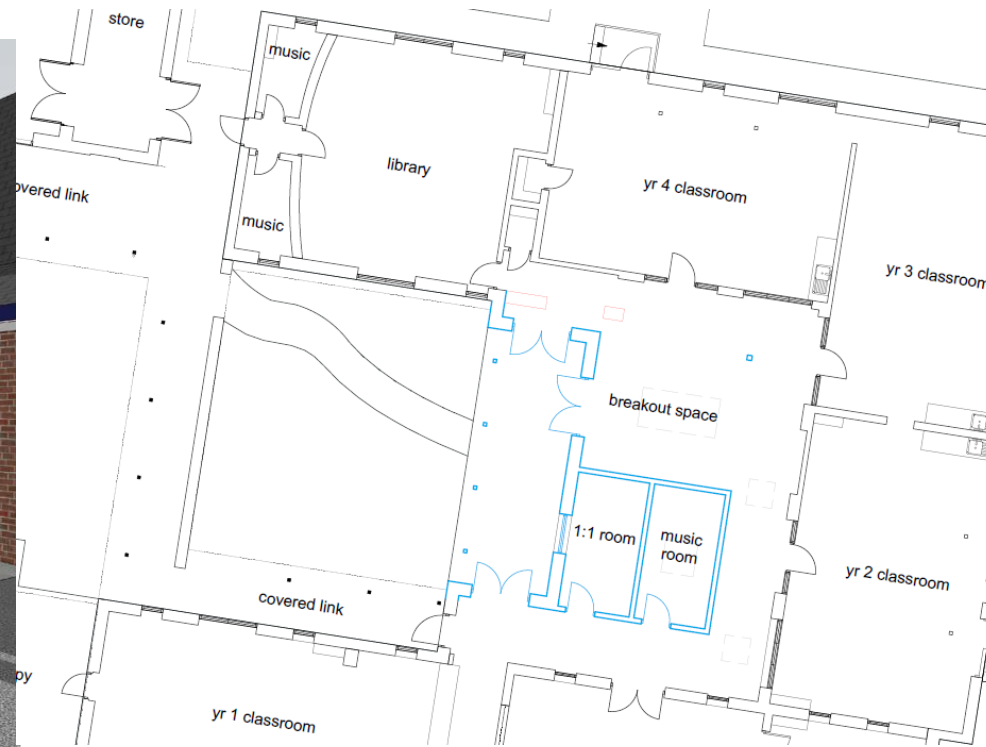
# We always strive to improve

- Staff team, governors, PTFA and pupils
- We **all** want the best for learners. We are here to teach them academic and 'soft skills' to help them in their lives ahead. Manners, being on time, being responsible, taking risks, dealing with the good days and bad!
- This requires a partnership with a shared vision & values between home and school

Our future building plans...are to create more break out spaces to allow us to teach all children better. At the same time we want to improve access and make our building more sustainable. This is a draft plan which governors are looking at:



This would provide...sound proof music practice rooms, a large break out learning space for years 3,4,& 5, keep outdoor space by using part of the courtyard, make the building more eco...we plan it will take 3-5 years to raise funds and seek your help and ideas for this



# How **you** can help the whole school community

- Support day to day events e.g. always pay promptly, even for the little amounts
- PTFA events
- Volunteer if you can – your time is worth ALOT
- Set up a direct debit £5 or £10 or £20 a month makes a huge difference – contact Mrs Tewkesbury our Finance Officer if you can help
- Support our whole community – we are setting up a hardship fund. If you can help please do.



THANK

YOU